

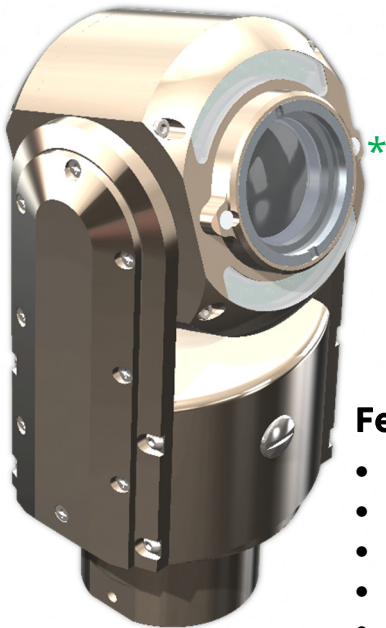
PTZ-90 HD CAMERA SYSTEM

The PTZ-90HD Camera System was designed to perform detailed remote visual inspection and monitoring in confined spaces, at great distances and in hazardous environments where personnel access is often limited. With Application Specific Module Programming, the camera can be optimized to meet the visual goals of your specific application.

The PTZ-90HD utilizes a top-of-the-line full HD camera with wide dynamic range and features ultra-bright LED array lighting, 360° continuous pan, 270° tilt, 10X optical zoom and up to 300X full zoom. The camera head can be pressurized and is submersible up to 100 meters. The housing is made from lightweight, corrosion resistant, nickel-plated aluminum with a sapphire viewing window and stainless-steel hardware.

The system includes a portable controller with joystick, light control, locking power connector, multiple outputs and more. Multiple controller models are available including one with DVR and on-board memory storage.

Optional Aux light for an additional 2,450 lumen output capable of illuminating objects over 90' away!



Featuring:

- 1080p resolution with WDR
- Adjustable shadowless LED illumination
- Nickel-plated aluminum housing
- Waterproof and submersible to 100m
- 360° continuous pan & 270° tilt range
- 10X optical zoom (with up to 300X zoom)
- Full camera feature access
- Standard cable lengths at 150' to 750' (extended lengths available via fiber)

Dimensions:

3.45" [88mm] Diameter
6.70" [170mm] Long

PTZ-90 HD

SPECIFICATIONS

Camera Model:	PTZ-90HD
Resolution	1080p
Image Sensor	1/2.8" Sony CMOS Sensor
Effective Pixels	2.13 million (1945(H) x 1097(V))
Min. Illumination	Color(1/30s, 60dB) : 0.003 lux, BW(1/30s, 60dB) : 0.0004 lux
Shutter Speed	1/30(25) ~ 1/30,000 sec
Signal/Noise Ratio	More than 52 dB
WDR/BLC	Off / WDR / BLC
White Balance	Auto / One Push / Manual / Indoor / Outdoor
LED Illumination	Yes
Operating Temperature	-10°C to 50°C
Storage Temperature	-20°C to 60°C
Zoom	10x Optical, 30x Digital (300x AF Zoom)
Cable Length	150'-750' (up to 2000' with fiber)
Wide Dynamic Range	Yes
Pressure Rating	10 Bar (334')

Controller Model:	PTZ Desktop Controller
Compression Format	H.264/H.265
Frame Rate	60fps
Data Storage (DVR Model Only)	2x SD Cards up to 512GB each (1TB total)
Photo Format	JPG/JPEG
Image Resolution	Up to 8MP
Image Capture	Yes
HDMI Video Resolution	1920 X 1080
CVBS Video Resolution	720 X 576
Video Format	MP4 (H265+AAC)
Power Supply	36vDC
System Language	Multiple Options
Illumination Control	Yes, variable 0-100%
Operating Temperature	-17°C to 48°C [0°F to 120°F]

