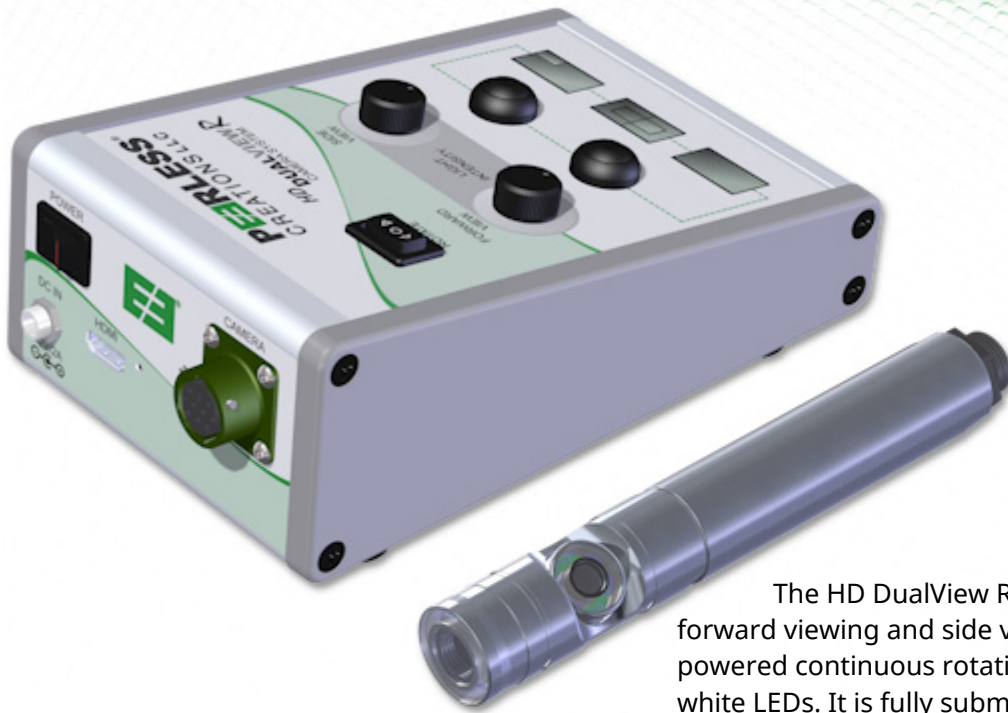
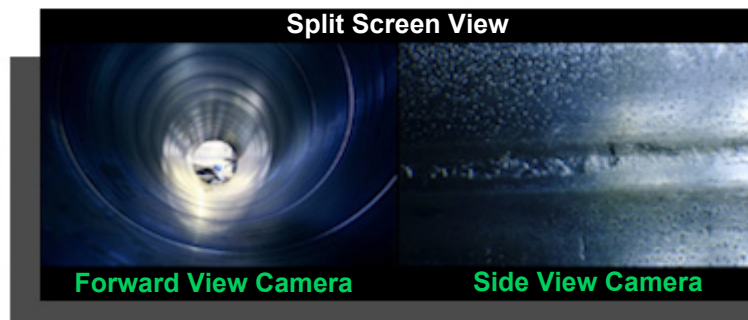


# HD DUALVIEW R CAMERA SYSTEM



The HD DualView R camera system features forward viewing and side viewing HD cameras with powered continuous rotation and shadowless, bright white LEDs. It is fully submersible up to 30m (100'). The housing is stainless-steel, 1" diameter by 6-1/2" long with sapphire windows and toolless adjustable focus lenses. Lenses are available at 40°, 55°, 70°, 90° and 110°. Included is a portable controller with rotation control, dual light adjustment, picture mode cycling, HDMI output, locking power and camera connectors.



# HD DUALVIEW R

## SPECIFICATIONS

### Camera (X2)

Image Sensor	1/4.4 Color CMOS
Effective Image Area	3.6mm X 2.03mm
Effective Pixel Array	1284H X 724V
Pixel Size	2.8µm X 2.8µm
Signal/Noise Ratio	>43.1dB
Back Light Compensation	Auto
White Balance	Auto
Min Illumination	.001Lux
Wide Dynamic Range	Auto WDR
LED Illumination	Yes
Operating Temperature	-40°C~85°C
Cable Length	Up to 60 meters [200']



### HD DualView Controller

Illumination Control	Yes
Frame Rate	60fps
Image Resolution	Up to 8MP
Image Mode	Full Screen/Split Screen/Picture-in-picture
HDMI Video Resolution	1280 X 720
CVBS Video Resolution	720 X 576
Operating Temperature	-30°C~70°C
Power Supply	DC IN 12V < 1.5 A
System Language	Chinese/English/German/Spain/Polish/French
Recording Mode	Optional